

# Cavity Wall Lintel - CH150/100

Open back lintel

## Benefits

### Easy-to-use open back profile

Allows masonry to be built up continuously on both outer and inner leaf

### Materials used in Lintels

The **CG**, **CH** and **CX** ranges are formed from galvanised steel, then powder coated

### Duplex corrosion protection

Ensures optimum durability and longevity

### Built-in DPC

Saves time in construction and means cavity is easy to clean without risk of damage to DPC

### Integral Plaster key

With staggered slots applied to the inner flange and ribbed underside of insulation (perforated steel baseplate on **CH** and **CX** range)

### Continuous insulation

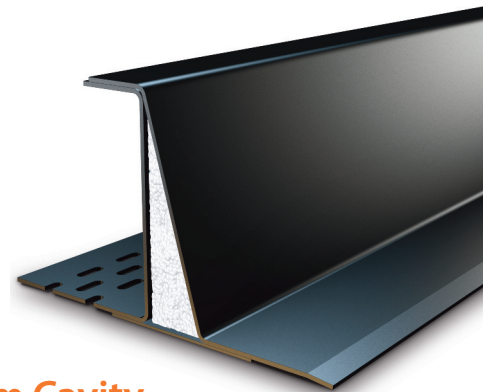
Maximising thermal efficiency, minimising cold bridging

### Features:

- Triangulated masonry load
- Supporting uniformly distributed masonry load
- Supporting uniformly distributed timber floor and roof loads
- Suitable for fair faced inner leaf masonry
- Supports concrete floors
- Attic truss loads
- Larger span multiple truss loads

### Conditions of use:

- Nominal 150mm end bearings
- Both leaves are raised together
- One course of block prior to installation of floor/roof

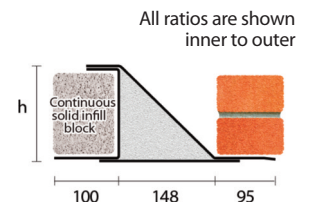


## 150-165mm Cavity 100-115mm Inner Leaf

### Heavy Duty



Standard lengths are available in 150mm increments.



All ratios are shown inner to outer

CH150/100	900-1800	1950-2100	2250-2400
Standard lengths (mm)	900-1800	1950-2100	2250-2400
SWL 1:1/19:1 (kN)	32	48	45
Weight (kg/m)	13.1	15.6	15.6
Nominal height 'h' (mm)	157	157	157

**i** The SWL (safe working load) is based on the total UDL (uniform distributed load) over maximum span using 150mm end bearings.

### Concrete Floor Loads

When using the Catnic **CH** and **CX** open back ranges with concrete floors, always ensure that the blockwork is built tight against the inner vertical face of the lintel and that a mortar joint is added to the top of the blockwork so that the floor units have an even spread over the inner flange of the lintel.

**Note:** To achieve the '**CH** and **CX**' loading figures indicated, lintels must be built-in as illustrated, ensuring that the blockwork infill is well-jointed during construction and compatible with the strength of the masonry above.



Where **CH** and **CX** lintels are required to support greater loads than the figures published please contact our **Technical Services Department on**

**029 2033 7900**

[www.catnic.com](http://www.catnic.com)

Care has been taken to ensure that the contents of this publication are accurate, but Tata Steel Europe Limited and its subsidiaries, which includes Tata Steel UK Limited, do not accept responsibility or liability for errors or information that is found to be misleading. Before using products or services supplied or manufactured by Tata Steel Europe Limited and its subsidiaries, customers should satisfy themselves as to their suitability.

© Copyright 2015 Tata Steel UK Limited.

**Note:** Whilst the above information is intended to offer general guidance regarding typical applications, it should not be considered as comprehensive. Requirements not fully covered by the above should be referred to our technical services department for individual consideration.

### Catnic

Pontypandy Industrial Estate  
Caerphilly  
CF83 3GL  
T: 029 2033 7900  
F: 029 2086 7796

01/2015